

UniVic Shape 3D Duo



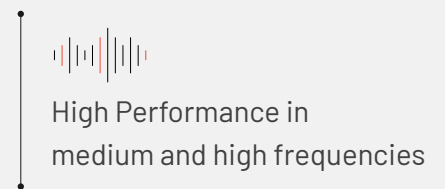
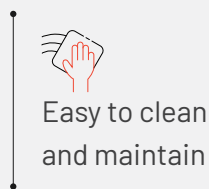
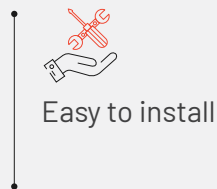
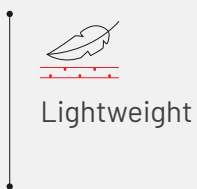
UniVic Shape 3D Duo



DESCRIPTION:

Eco-friendly, high-performance acoustic art wall frames crafted from three layers of High-Density PET. These 3D geometric sculptures offer both sound absorption and striking visual impact, bringing a modern, abstract aesthetic to hotels, restaurants, and private spaces.

FEATURES:



AVAILABLE FINISHES:

Colors



Finishes



*Color customization available on request subject to M00.

TECHNICAL INFORMATION:

Main Info

Dimensions (L x H x W)	1160 × 595 × 52 mm
------------------------	--------------------

Installation

Fixation	Hanging support bracket (included)
Place	Walls
Material	High-density PET

Packaging Information

Units/Box	2
Box Gross Weight	11.90 Kg

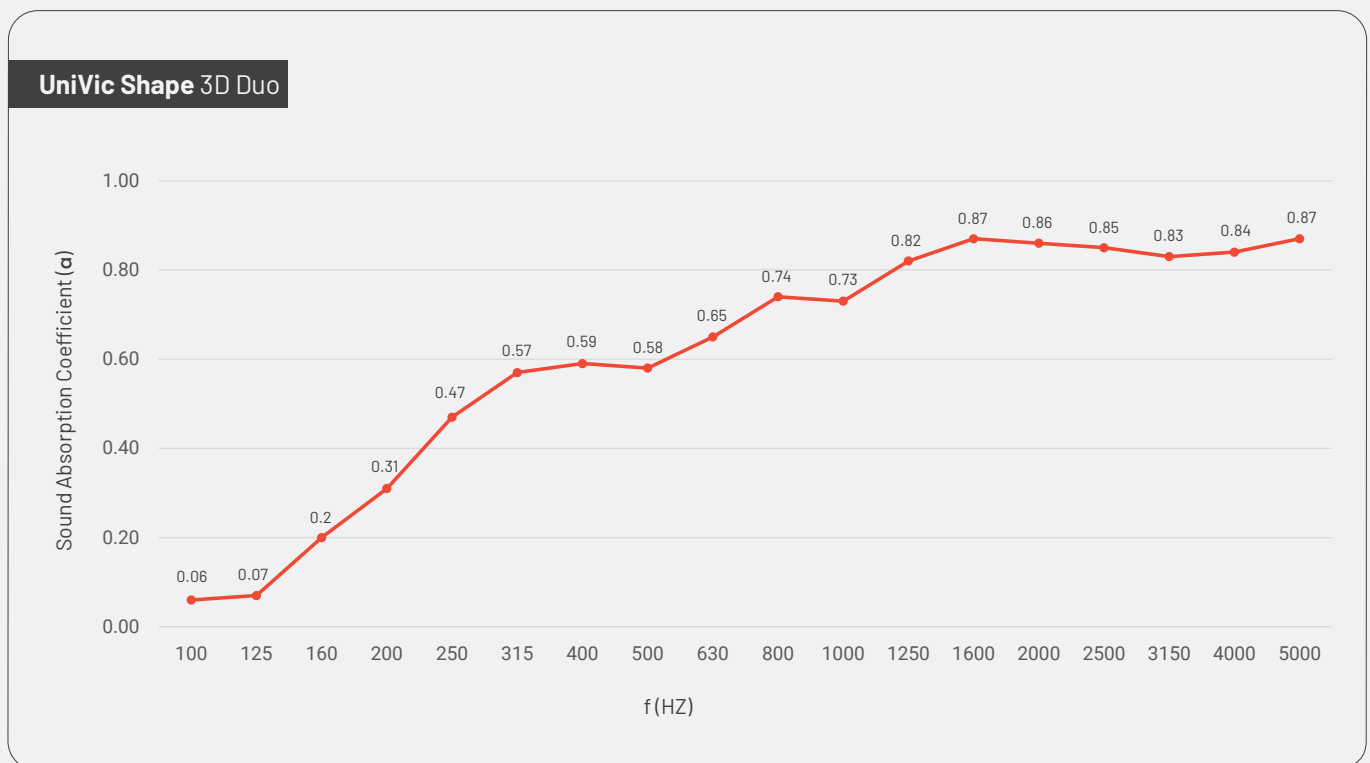
Performance

Functionality	Absorption
Absorption Frequency Range	Medium and High Frequencies
NRC	0.65

Fire Compliance

ASTM-E84 Class A | BS 476 Part 6 & 7 Class 1 | EN-13501 Part 1 C, s2, d0

ACOUSTIC PERFORMANCE:



Disclaimers:

Bespoke color and design combinations are available upon request, subject to minimum order quantity (MOQ).

Please note that the dimensions of these panels have a tolerance of +/- 2mm.

Do not apply these panels behind radiators or too close to a heat source.

A slight color variation may occur between different batches.

The product images used are illustrative and may differ from the actual product.

UniVic Shape 3D Duo



UniVic Shape 3D Duo



UniVic Shape 3D Duo

